

Paper Code: ICT-103 (Ist Sem)

Subject: Electrical Science

Time: 1:30 hrs

Max Marks: 30

Note: Attempt Q1 which is compulsory and any two questions from remaining.

Q1.

- a) Explain voltage and current divider rule with suitable example. Determine the current supplied by each battery in the circuit shown in Fig.1. (6)

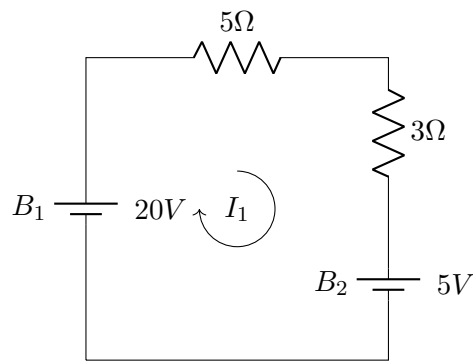


Fig.1